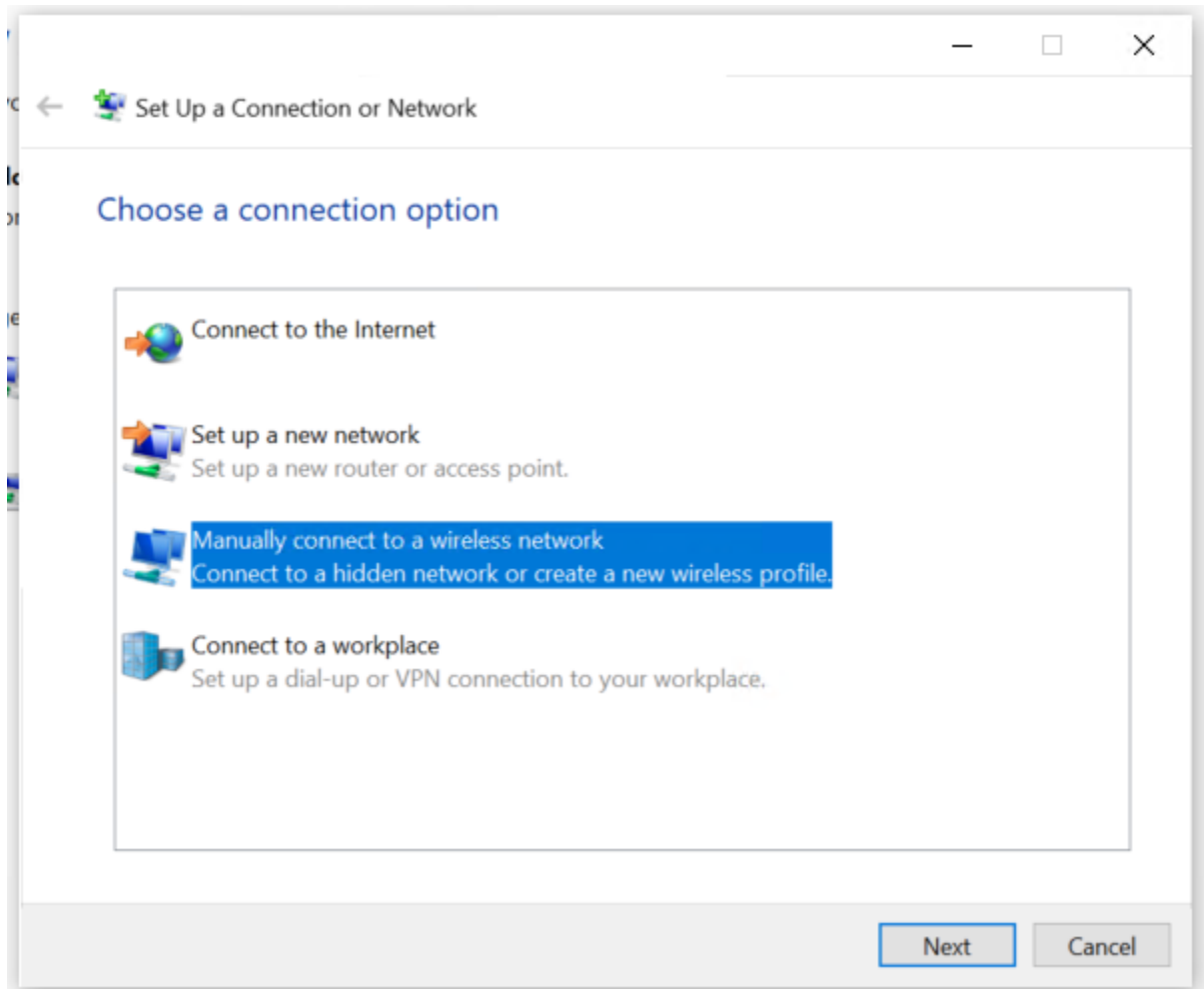


Connecting a Windows 10 machine to the network

Step 1: Go to the Start button and type “Control Panel” before hitting the Enter key.

Step 2: Click on the Network and Sharing Center. Once there, click on “Set up a new connection or network”.

Step 3: Highlight “Manually connect to a wireless network” before clicking Next.



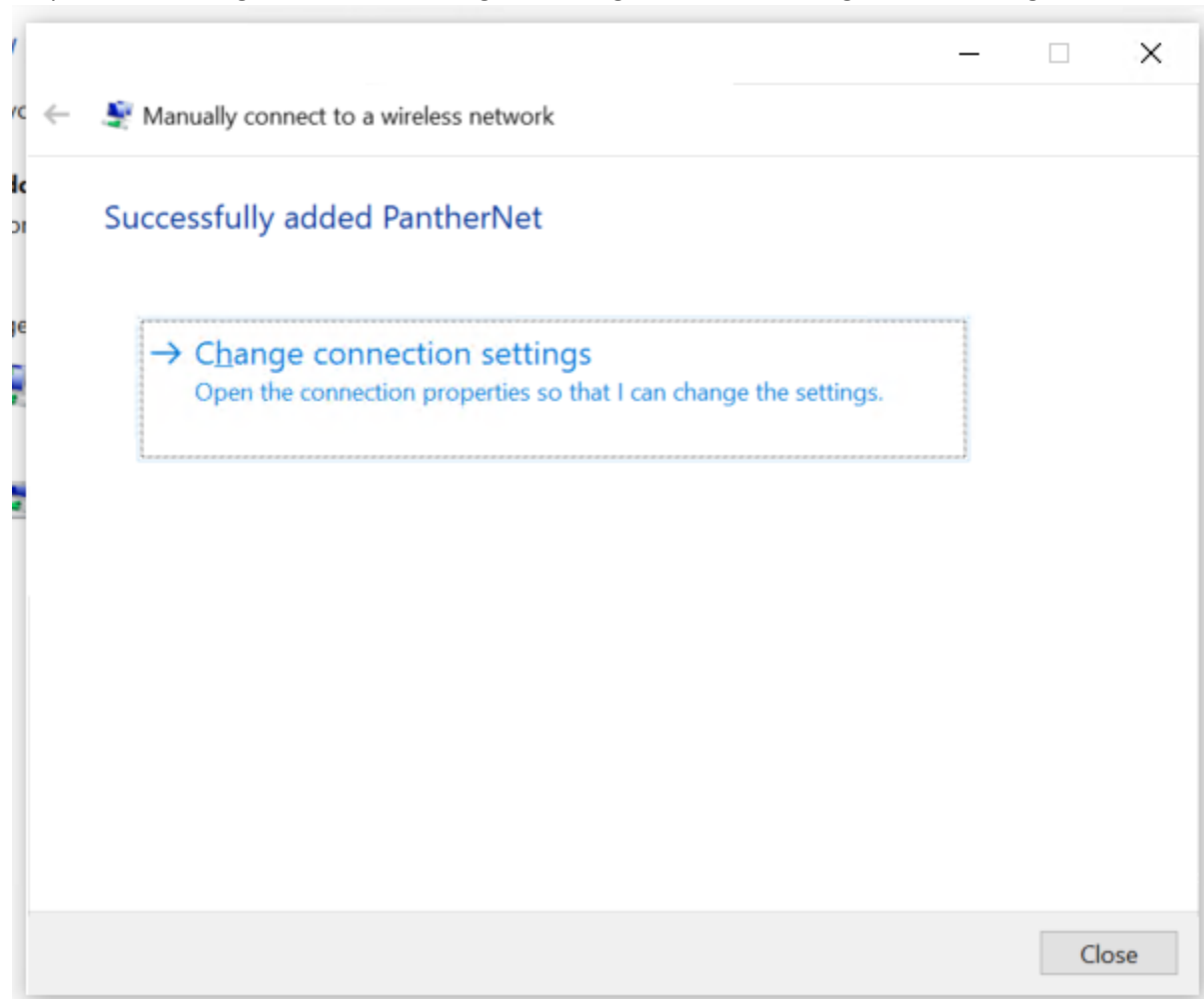
Step 4: Enter the Network name as PantherNet and the Security type has to be WPA2-Enterprise. Keep “Start this connection automatically” checked before clicking Next.

The screenshot shows a Windows Network Setup wizard window titled "Manually connect to a wireless network". The window has a title bar with standard minimize, maximize, and close buttons. Below the title bar is a navigation arrow and the title. The main content area is titled "Enter information for the wireless network you want to add". It contains the following fields and options:

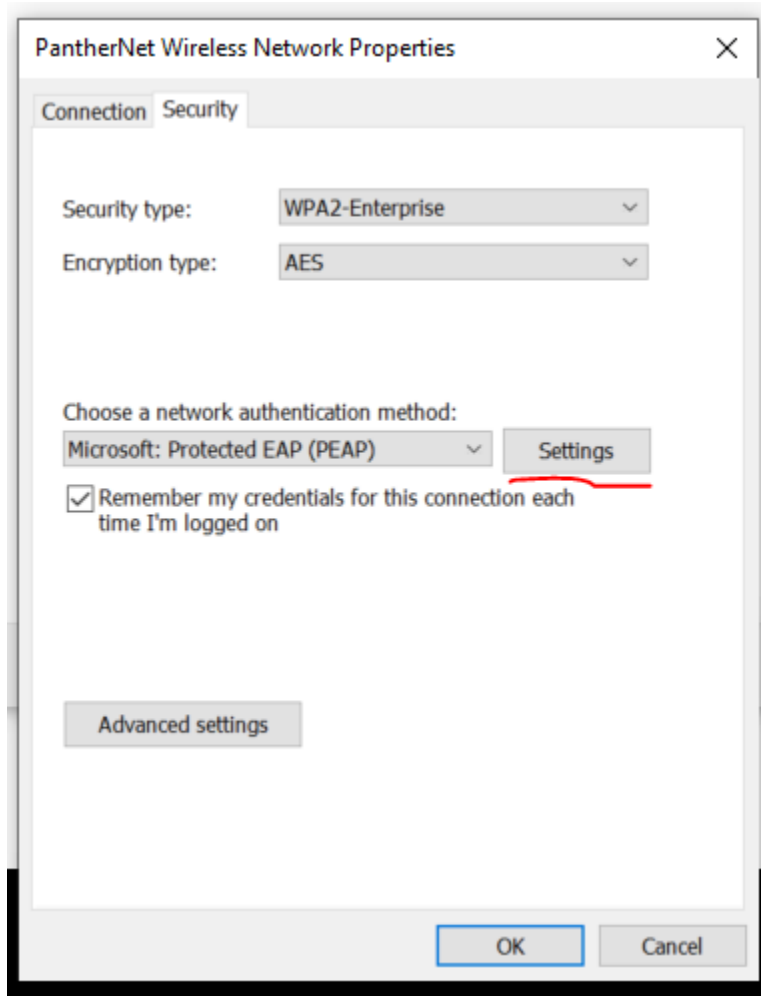
- Network name:** A text input field containing "PantherNet".
- Security type:** A dropdown menu with "WPA2-Enterprise" selected.
- Encryption type:** A dropdown menu with "AES" selected.
- Security Key:** An empty text input field.
- Hide characters
- Start this connection automatically
- Connect even if the network is not broadcasting
- Warning: If you select this option, your computer's privacy might be at risk.

At the bottom right of the window, there are two buttons: "Next" (highlighted with a blue border) and "Cancel".

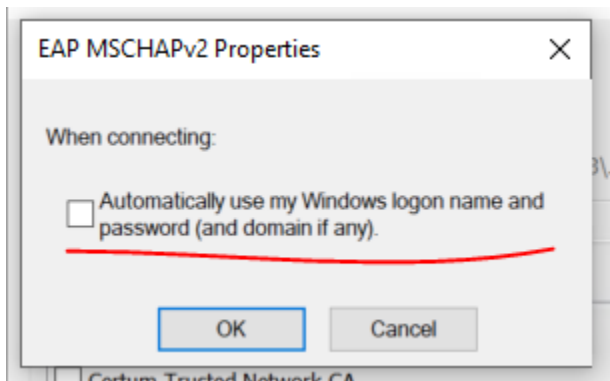
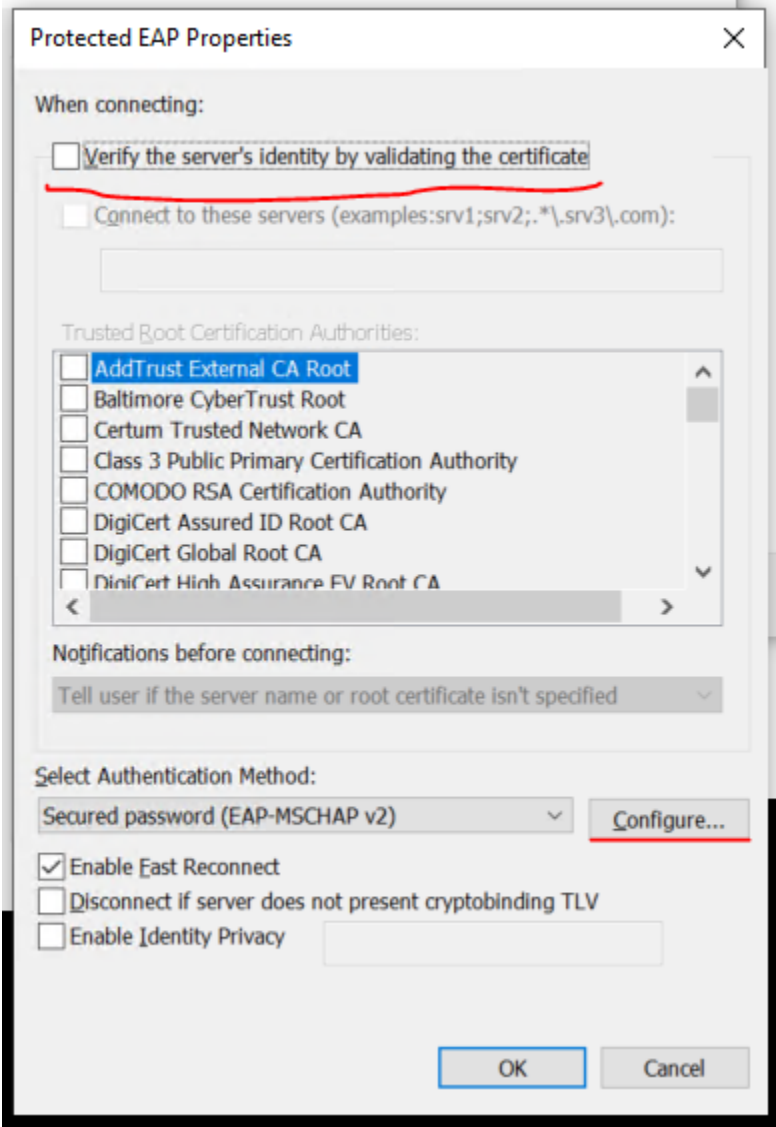
Step 5: Click “Change connection settings” to change additional settings before closing.



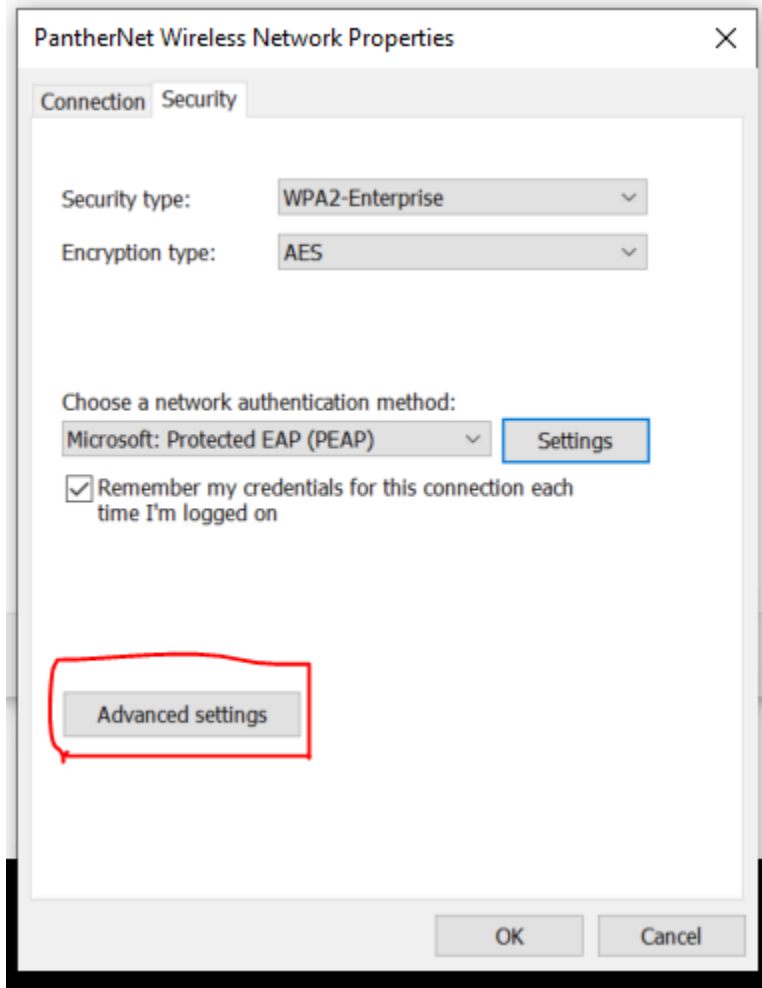
Step 6: Once the window pops up, Click on the Settings buttons next to “Choose a network authentication method” as highlighted below:



Step 7: Uncheck “Verify the server’s identity by validating the certificate”. Click on “Configure...” and uncheck “Automatically use my Windows logon name and password (and domain if any)”. Click Ok on that window before clicking Ok on the window that says “Protected EAP Properties” on the top as well as the window that says “PantherNet Wireless Network Properties”.

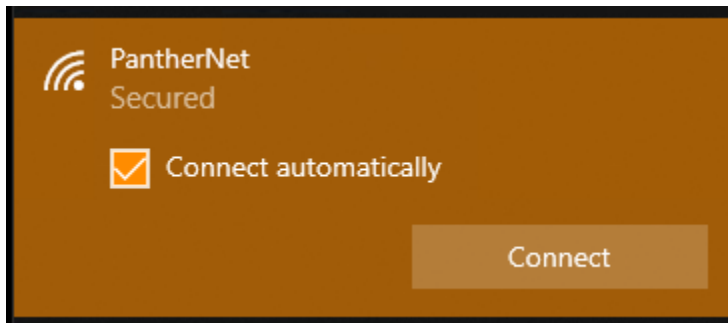
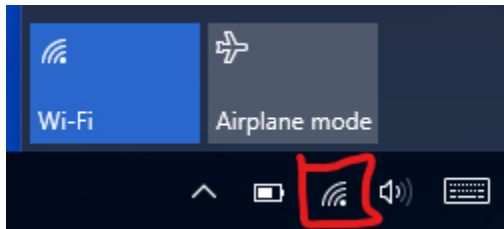


Step 8: Click on “Advanced settings”.

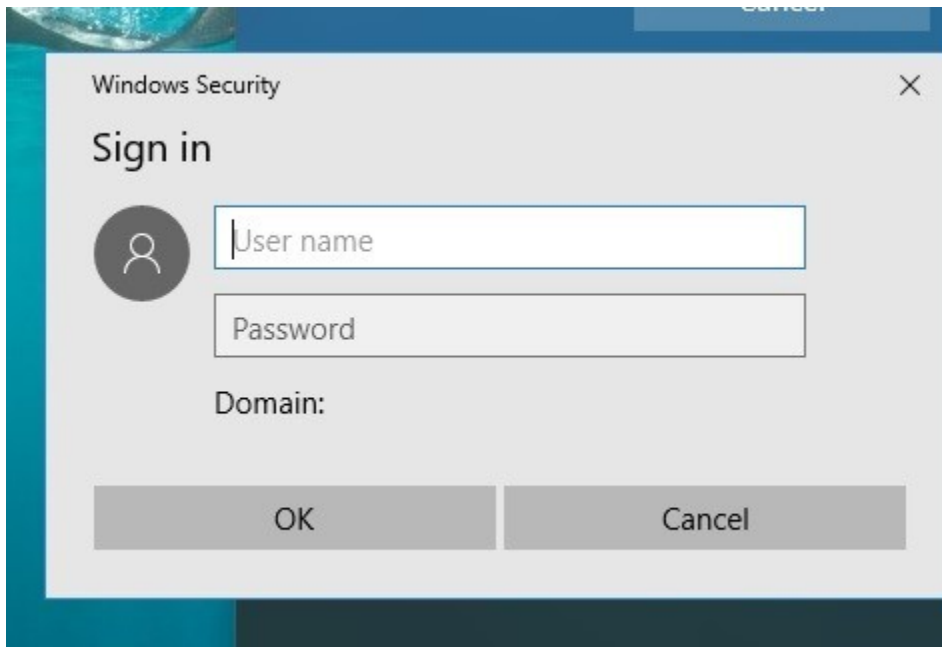


Step 9: Click on the box next to “Specify authentication mode:” and select “User authentication” from the drop down. Click Ok on the windows before clicking Ok on the windows that says “PantherNet Wireless Network Properties”.

Step 10: Click on the wireless symbol and select PantherNet from the list of wireless networks.



Step 11: Click on Connect and then it will ask for the username and password to log into it. They will login with their ODU username and password.



Step 12: It should show as "Connected" under PantherNet in the list of wireless networks.

