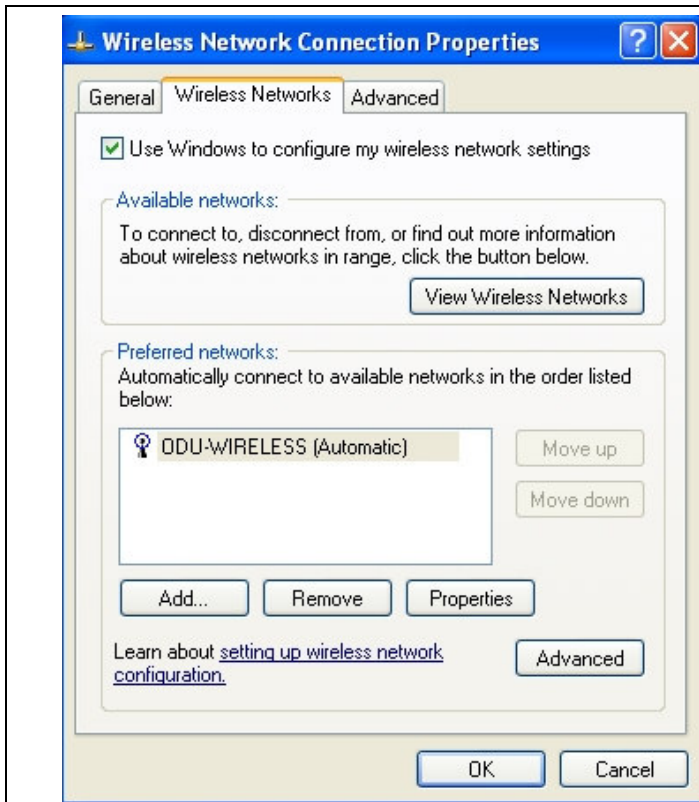


# Windows XP - Wireless Checklist

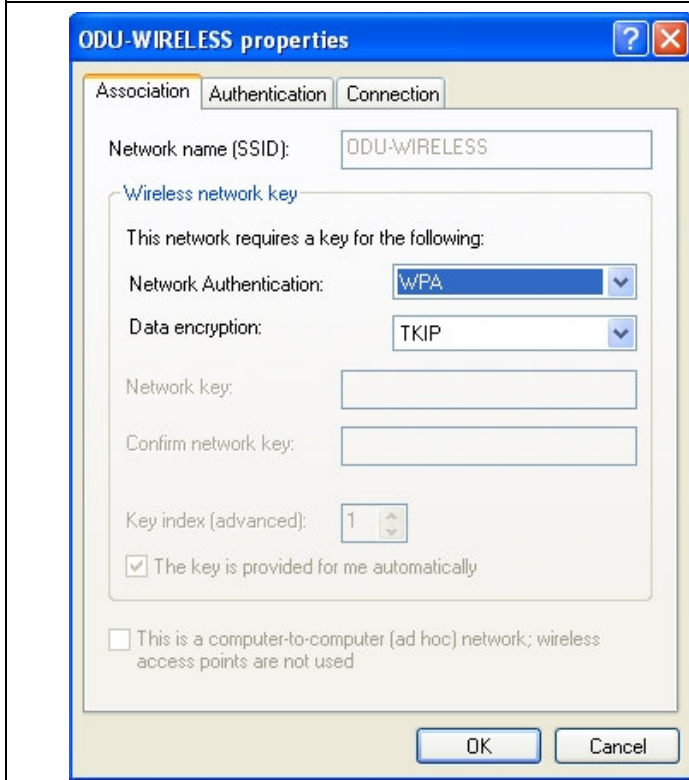


First disable all third party wireless utilities such as Intel Pro Wireless or Dell Wireless WLAN Utility.

Click **Start** -> **Control Panel** -> **Network Connections** -> (Right-Click) **Wireless Network Connection** -> (Left-Click) **Properties** -> Go to the **Wireless Networks** Tab

Make sure the "Use Windows to configure my wireless network settings" is check-marked.

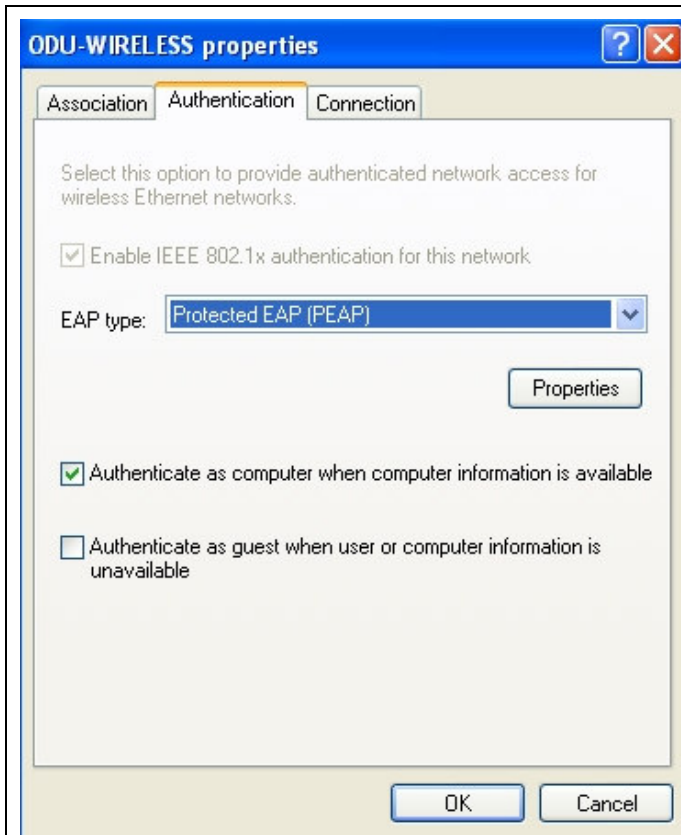
Next, Click on **Add**.



Type in the Network Name (SSID) as ODU-WIRELESS

**Network Authentication** - WPA

**Data encryption** - TKIP

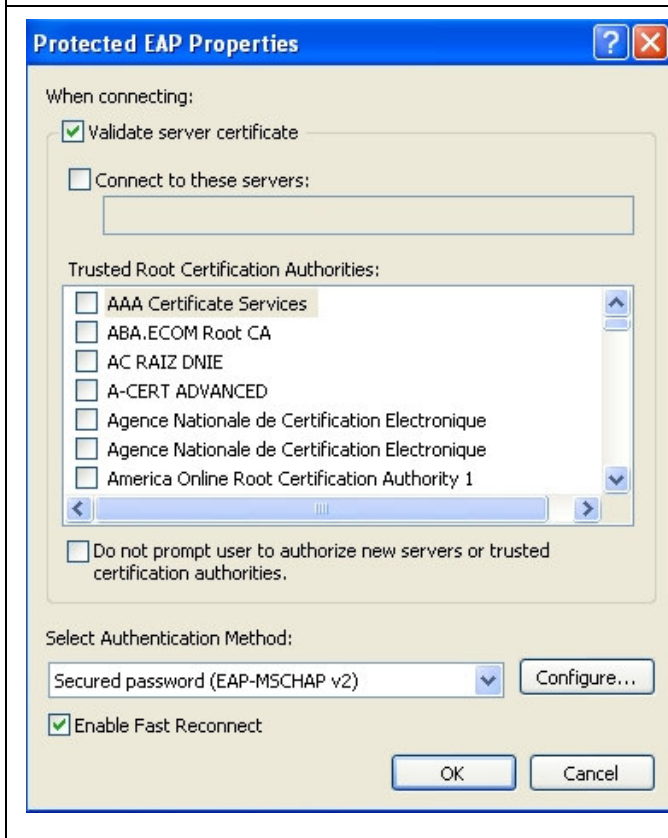


Under the **Authentication** tab, ensure the following fields are correct:

**EAP type:** Protected EAP (PEAP)

Also, make sure the boxes checked match the picture at left.

Click on **Properties** under **EAP type**.



The **Authentication Method** should be set to Secured password (EAP-MSCHAP v2)

Also, make sure the boxes checked match the picture at left.

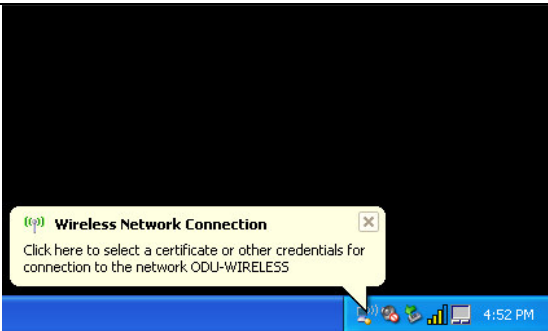
Click on **Configure** next to the **Authentication Method**.



Make sure that this box is unchecked if you log into windows with anything other than your ODC account.

Click **OK** here then click **OK** in the **Protected EAP Properties** window.

After this click **OK** on all other windows

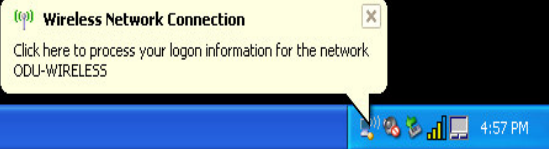
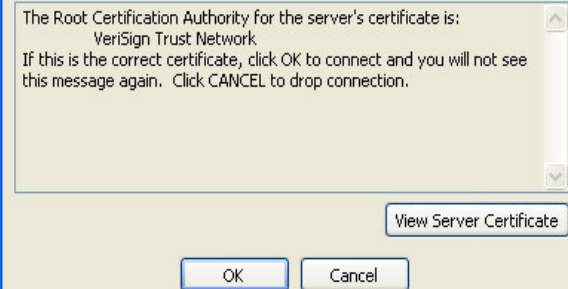
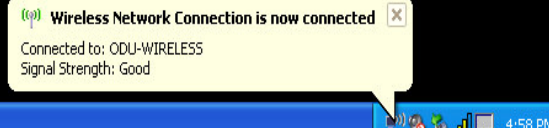


When you are in range of the network for the first time this message will pop up. Click on it.



Enter in your ODU user name and your password.

Enter in ODC as the Logon domain.

	<p>When this message pops up click on it.</p>
	<p>Click <b>OK</b> when this box pops up.</p>
	<p>You should now see this pop up showing that you are now connected to the wireless network.</p>